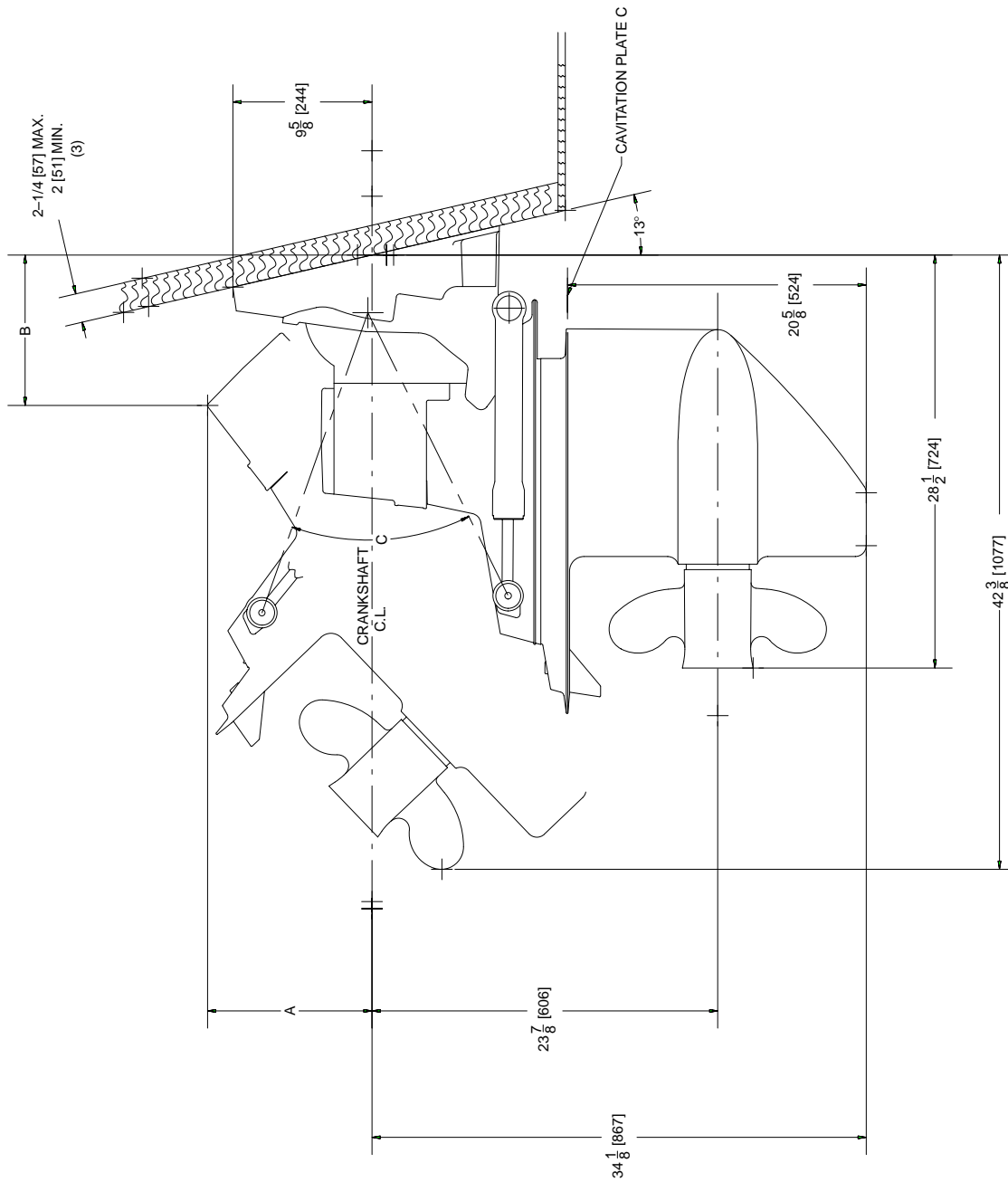


BRAVO TWO STERNDRIVE



BRAVO TWO STERNDRIVE

	A	B	C MAX	
NO SPACER	11-3/8 [289]	10-3/8 [264]	51	°
1 SPACER	10-13/16 [274]	11-1/4 [286]	46	°
2 SPACERS	10-8/16 [258]	12 [305]	41	°

SCALE APPROX.
1" = 1'
25.4mm = 304mm

- NOTES:
- (1) DIMENSIONS REQUIRE A MINIMUM 1/2 in. (13mm) CLEARANCE FOR MOTOR MOUNT DEFLECTION.
 - (2) SELECT THE APPROPRIATE EXHAUST RISE-HEIGHT TO MAINTAIN A MINIMUM OF 13 in. (330mm) BETWEEN THE TOP OF THE EXHAUST ELBOW AND THE WATERLINE OF THE BOAT AT MAXIMUM RATED LOAD.
 - (3) INNER AND OUTER SURFACES OF TRANSOM MUST BE PARALLEL WITHIN 1/8 in. (3mm) IN AREA COVERED BY TRANSOM PLATES AND REMAIN WITHIN TRANSOM THICKNESS LIMITS.
 - (4) FOR EXACT LOCATION OF CAVITATION PLATE IN RELATION TO BOAT BOTTOM, REFER TO INSTALLATION INSTRUCTIONS.
 - (5) NUMBERS INSIDE BRACKETS "[]" ARE IN MILLIMETERS.