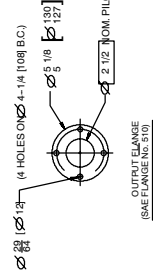


MIE 8.2L MPI BLUEWATER WITH VELVET DRIVE 5000V V-DRIVE TRANSMISSION

- NOTES:
- (1) Dimensions Require a 1/2 in (13MM) Clearance Due to Engine Mount Deflection.
 - (2) Select the Appropriate Exhaust Rise-Height to Maintain a Minimum of 13 in (330mm) between the top of the Exhaust Flange and the Watertine of the Boat at Maximum Rated Load.
 - (3) Exhaust Outlets Must Be Above Watertine of Boat at Maximum Rated Load, and Exhaust Flappers and Internal Shutters are Required.
 - (4) Shaft Centerline and Output Flange Face.



SCALE APPROX.
1" = 1"
25.4 mm = 25.4 mm

UNIT OF MEASURE
in. (mm)