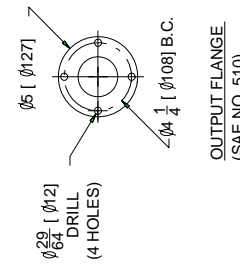


MIE 6.2L MPI WITH HURTH 630V V-DRIVE TRANSMISSION

- (1) DIMENSIONS REQUIRE A MINIMUM 1/2 in. (13mm) CLEARANCE FOR MOTOR MOUNT DEFLECTION.
- (2) SELECT THE APPROPRIATE EXHAUST RISE-HEIGHT TO MAINTAIN A MINIMUM OF 13 in. (330mm) BETWEEN THE TOP OF THE EXHAUST ELBOW AND THE WATERLINE OF THE BOAT AT MAXIMUM RATED LOAD.
- (3) EXHAUST OUTLETS MUST BE ABOVE WATERLINE OF BOAT AT MAXIMUM RATED LOAD.
- (4) DIMENSIONS APPLY TO POINT OF INTERSECTION OF OUTPUT SHAFT CENTERLINE AND OUTPUT FLANGE FACE.
- (5) NUMBERS INSIDE BRACKETS "[]" ARE IN MILLIMETERS.



UNIT OF MEASURE in. (mm)	SCALE APPROX. 1" = 1" 25.4mm = 304mm
-----------------------------	--------------------------------------------