

OUTPUT FLANGE
(SAE NO. 510)

UNIT OF MEASURE in. [mm]	SCALE 1" = 1' 25.4mm = 304mm
-----------------------------	------------------------------------

864773 SHEET 1 OF 3
350 MAG MPI/MX 6.2L MPI WITH VELVET DRIVE 5000V V-DRIVE TRANSMISSION

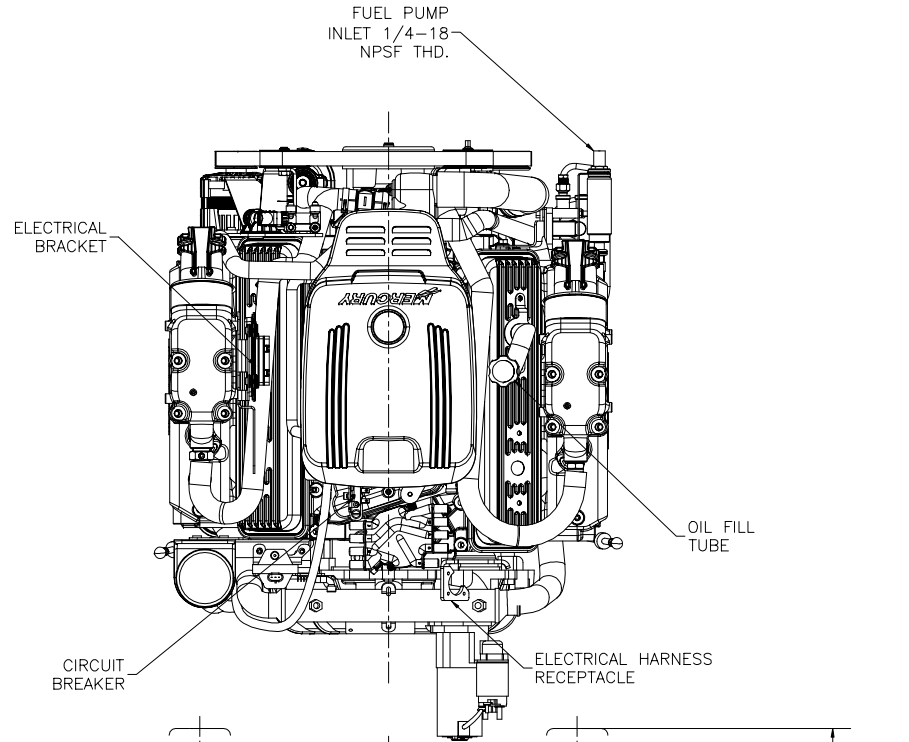
NOTES:

- (1) DIMENSIONS REQUIRE A MINIMUM 1/2 in. (13mm) CLEARANCE FOR MOTOR MOUNT DEFLECTION.
- (2) DIMENSIONS APPLY TO POINT OF INTERSECTION OF OUTPUT SHAFT CENTERLINE AND OUTPUT FLANGE FACE.
- (3) DIMENSIONS TO SEA WATER PUMP INLET.

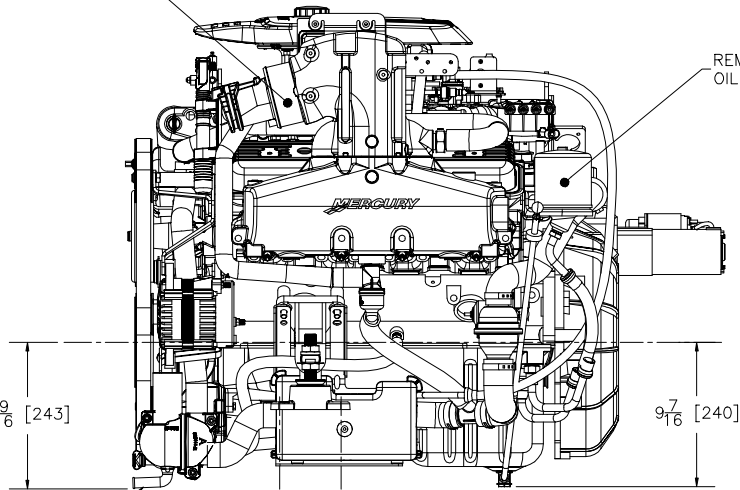
864773 SHEET 2 OF 3
 350 MAG MPI/MX 6.2L MPI WITH VELVET DRIVE 5000V V-DRIVE TRANSMISSION

NOTES:
 (1) DIMENSIONS REQUIRE A MINIMUM 1/2 in. (13mm) CLEARANCE FOR MOTOR MOUNT DEFLECTION.

UNIT OF MEASURE	SCALE
in. [mm]	1" = 1' 25.4mm = 304mm

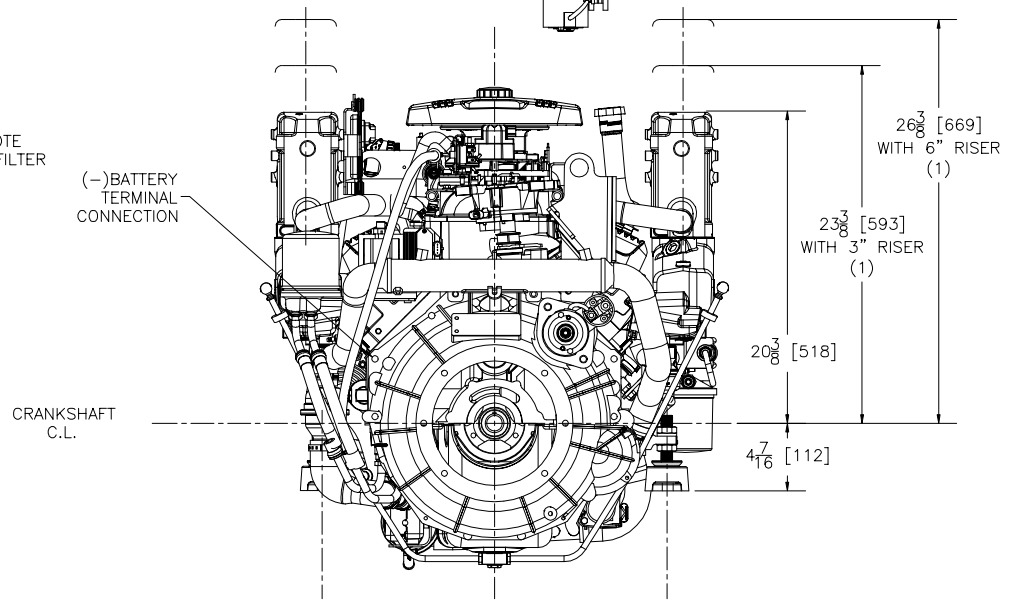


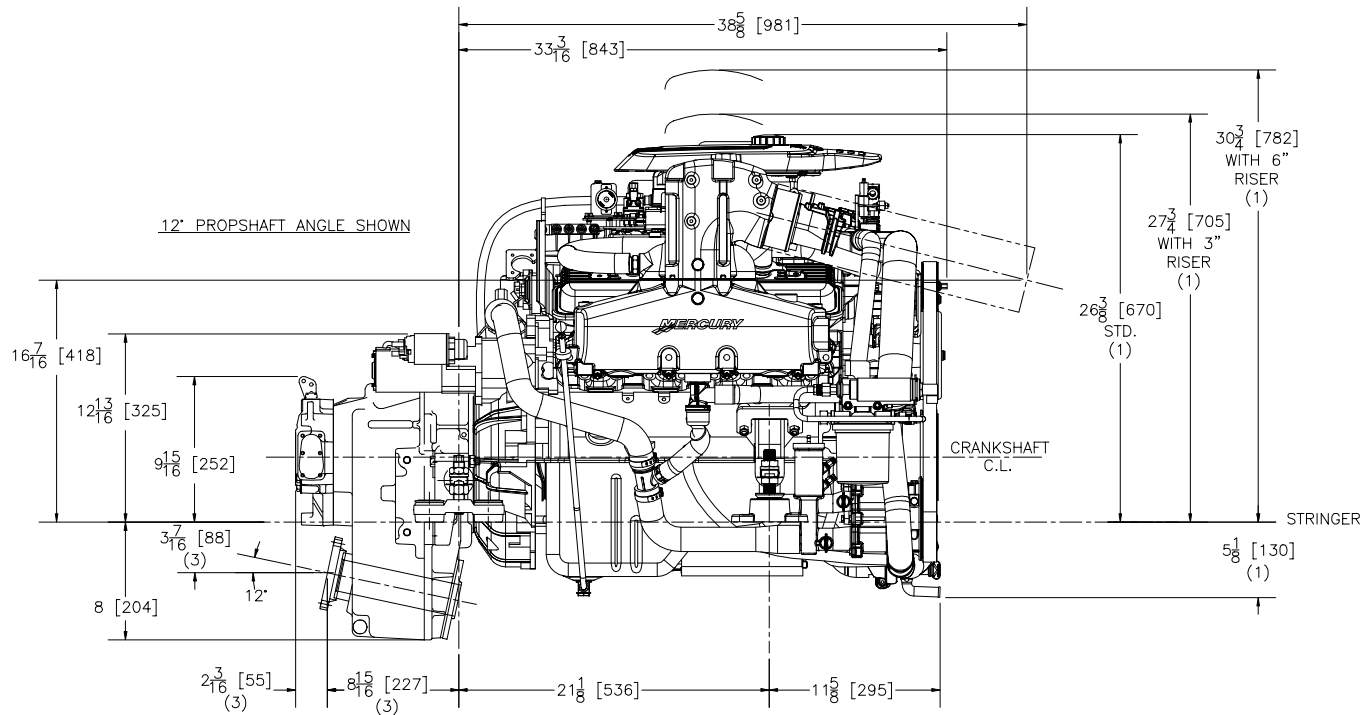
EXHAUST OUTLET
 DIA. 4"(102) X
 2"(51) LONG



PORT SIDE WATER DRAIN
 (AIR ACTUATED SYSTEM)

4 [102] BETWEEN 1/2 [13] NOM. DIA. BOLT HOLES





864773 SHEET 3 OF 3
350 MAG MPI/MX 6.2L MPI WITH VELVET DRIVE 5000V V-DRIVE TRANSMISSION

- NOTES:
- (1) DIMENSIONS REQUIRE A MINIMUM 1/2 in. (13mm) CLEARANCE FOR MOTOR MOUNT DEFLECTION.
 - (2) BASE OF MOUNT TO BE PARALLEL TO STRINGER. MOUNTS SHOWN AT CENTER OF ADJUSTMENT.
 - (3) DIMENSIONS APPLY TO POINT OF INTERSECTION OF OUTPUT SHAFT CENTERLINE AND OUTPUT FLANGE FACE.

