

A Factual Report from Mercury Marine



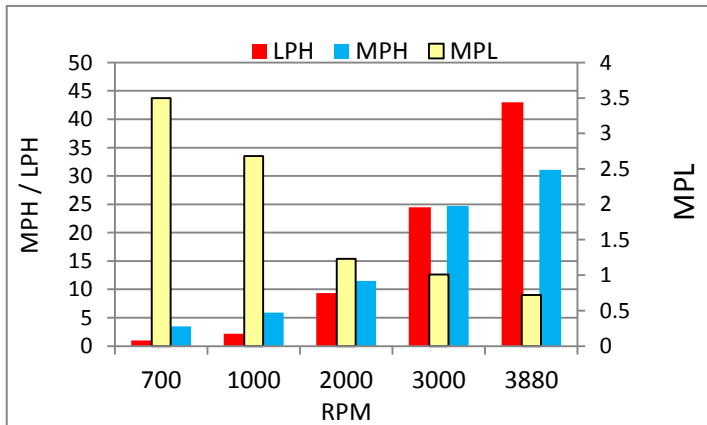
## KONDISI TES

Tanggal Tes	September 10, 2014
Penguji Tes	X.D'Cruz / M.Besigk
Berat Kapal Saat Tes (Kg) [Pounds]	(5000 Kg) [11.000 Lbs]
Suhu Udara (Fahrenheit) [Celcius]	( 89.6 F ) [32 C ]
Ketinggian (feet)	0
Kecepatan Angin (MPH)	0-3
Air Tawar / Asin	Saltwater
Kapasitas Bahan Bakar Saat Tes (gallons)	150 L Fuel / 120 L Water
Negara	INDONESIA

## RINGKASAN PERFORMA

Kecepatan Mak. (MPH@RPM) [Knts]	(31 Mph) [27 Knts ]
Akselerasi 0 - 20 MPH (detik)	12
0 - WOT (detik)	20

## KURVA PERFORMA



## DATA PERFORMA

JARAK	KECEPATAN	FUEL	FUEL
RPM	MPH	LPH	MPL
700	3.5	1	3.5
1000	5.9	2	2.7
2000	11.5	9.3	1.2
3000	24.7	24.5	1.0
3880	31	43	0.7

## SPESIFIKASI MESIN

Mesin	2.8 L QSD MCM
Tenaga Kuda	Dual 220 Hp
Jumlah Silinder	6
Rasio Gigi	2.1 : 1
Nomor Model	2.8 L

## SPESIFIKASI KAPAL

Mnufaktur	PT Fibrte Fibreglass
Website	x
Model Kapal	12 Meters Fisheries Patrol Boat
Tipe Lambung / Cat	V-Hull
Material	Fiberglass
Panjang (feet) [m]	( 40 Ft ) [ 12m ]
Lebar (feet) [m]	(10.5 Ft ) [3.2m]
Tinggi Transom (inches)	X Dimension + 1 Inch
Sudut Kemiringan Transom (derajat)	14
Sudut Kemiringan Lambung (derajat)	21
Kapasitas Maksimum Tenaga	x
Kapasitas Bahan Bakar(gallons)	(225 Gl ) [851 L ]
Tipe Kemudi	Hydraulic
Berat Kapal Kering (pounds) [T]	(8377 lbs) (3.8 T)

## SPESIFIKASI PROPELLER

Model	Bravo II
Manufaktur	Mercury
Diameter/Pitch	18 1/4 X 19 Inches
Jumlah Daun	3
Material	Stainless Steel

