



VesselView[®]

GAUGES & DISPLAYS



See More, Do More.



SmartCraft

Mercury® SmartCraft digital technologies are more than just state-of-the-art controls, sensors and gauges. Through seamless engine integration, the crystal-clear VesselView® displays and intuitive piloting systems available in the SmartCraft suite make boating easier and simpler for everyone. SmartCraft digital technologies are the ultimate solution for taking total control of your boat and your experiences on the water, giving you the power to do more.





COURTESY LITE UNDERWATER LITE

UNDER DECK

HORN





VesselView903



VesselView703



VesselView403



VesselView502

VESSELVIEW® DISPLAYS

A VesselView display is the information portal to your Mercury® propulsion system. It delivers complete engine performance data in one intuitive platform while serving as your hub for operating select SmartCraft® digital technologies. Boaters can even link in onboard audio systems, digital switching, GPS chartplotters, radar and sonar. A VesselView display can replace gauges so you can manage everything from one screen.

Mercury offers four VesselView display models to fit any boater's preferences and any boat's helm:

VesselView903

The 9-inch 903 display features an anti-glare glass touchscreen, GPS and chartplotter capability plus embedded Wi-Fi® connectivity for the maximum level of control and fun.

VesselView703

The 703 includes the same compatibility and performance features as the larger 903, but with a 7-inch touchscreen and manual button interface.

VesselView502

Perfect for tighter spaces, the 5-inch 502 touchscreen display is the ideal solution for integrating SmartCraft performance on smaller fishing and family vessels.

VesselView403

The compact 403 delivers big performance in a small package with a 4-inch LCD display and manual buttons for controlling up to two engines.

Description	Part Number
VV903 Single Engine Kit	8M0129543
VV903 Multi Engine Kit	8M0129545
VV903 Display Only	8M0129544
VV703 Single Engine Kit	8M0124495
VV703 Multi Engine Kit	8M0124496
VV703 Display Only	8M0124497
VV502 Single Engine Kit	8M0110643
VV502 Multi Engine Kit	8M0110646
VV502 Display Only	8M0110644
VV403 Kit	8M0124498

**SMARTCRAFT SYSTEMS
AVAILABLE ON VESSELVIEW DISPLAYS**

From a VesselView display, boaters can monitor critical engine data such as fuel flow, fuel efficiency, engine hours, rpm, trim settings, speed and more while taking control of powerful SmartCraft digital technologies that make boating easier and more enjoyable, including:

- Troll Control
- Smart Tow®
- AutoPilot
- Active Trim
- Advanced Sound Control
- Cruise Control

Some VesselView features require additional components. Not all features are available with every Mercury engine.



VESSELVIEW MOBILE®

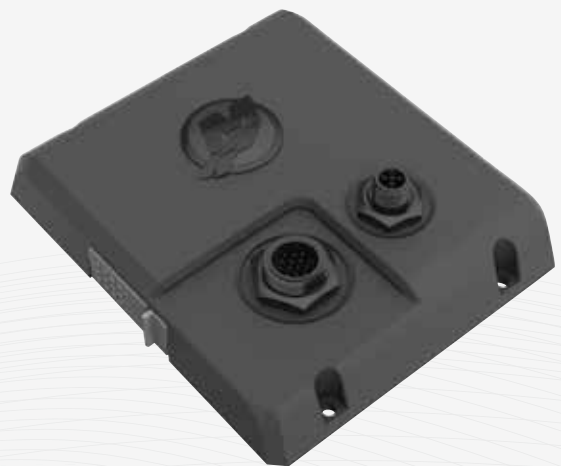
Boaters can keep track of critical engine data and routine maintenance schedules on their smartphone or tablet with VesselView Mobile. The easy-to-install, plug-and-play Bluetooth® module links SmartCraft-capable Mercury engines* to a custom app available for Android™ and IOS® operating systems. With VesselView Mobile, you'll always know what's happening under the cowling or in the engine compartment.

**Compatible with 2004 and newer, 40hp and above SmartCraft-capable engines.*

VESSELVIEW LINK

VesselView Link integrates SmartCraft data and control with compatible Lowrance® and Simrad® multi-function displays, giving boaters even more performance at their fingertips. This “black box” device is simple to install with plug-and-play connections. It allows boaters to conveniently access the VesselView system on the same screen where they're utilizing GPS chartplotter, sonar, radar and VHF functionality. It can also integrate with digital switching and entertainment systems for the ultimate onboard command center.

VesselView Link is sold individually and included in select 903, 703 and 502 kits.



Description	Part Number
VV Link Single Engine Kit	8M0110639
VV Link Multi Engine Kit	8M0110641

SMART TOW[®]

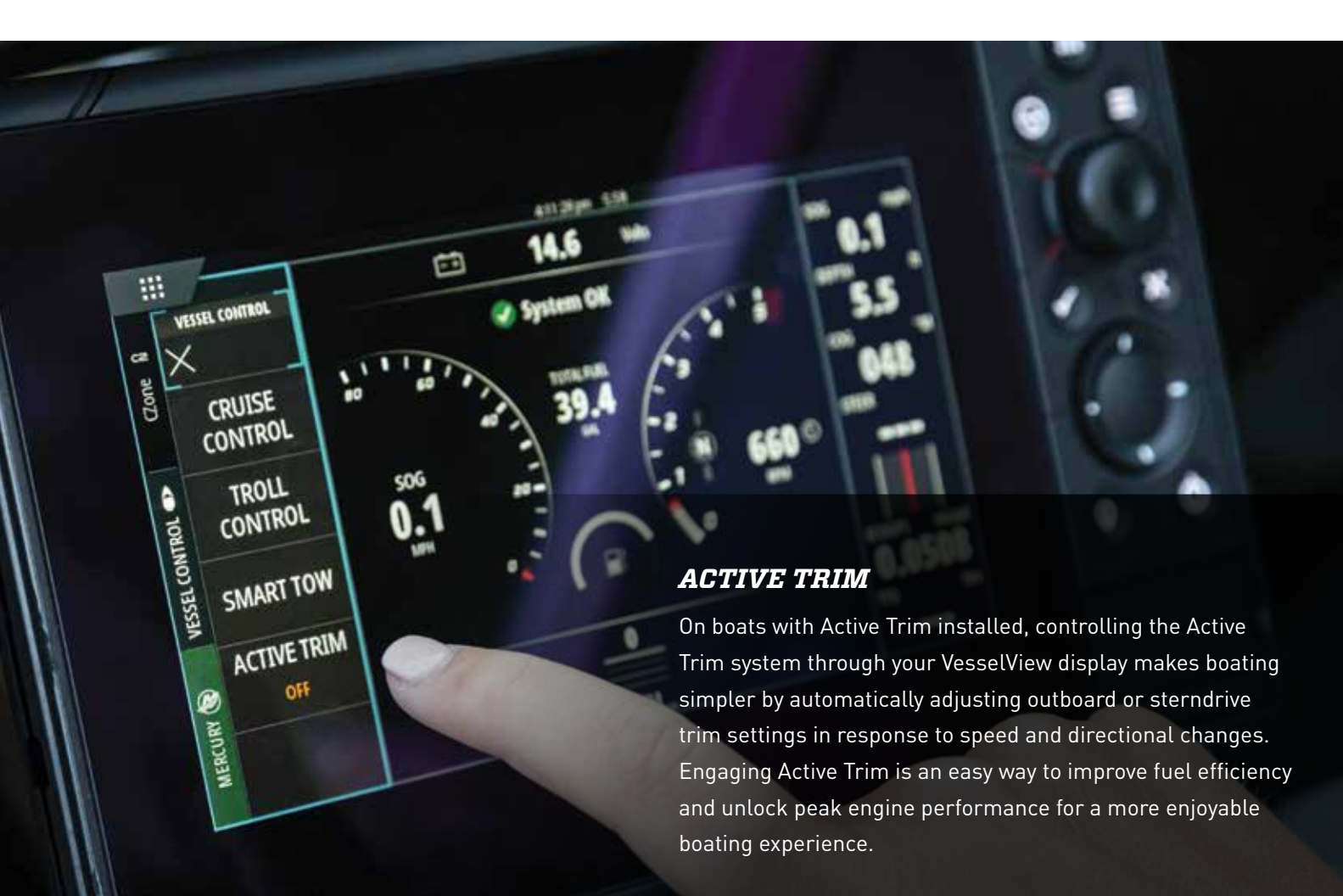
Working together with Mercury[®] Digital Throttle & Shift controls, the Smart Tow system takes the guesswork out of pulling skiers, tubers, wakeboarders and wakesurfers. With a few simple settings, you can lock in speed and launch intensities for each rider, and the Smart Tow system makes all the necessary adjustments to deliver the perfect watersports experience. On-the-fly changes are just as simple so you can stay focused on the water in front of you and the surfer behind you. The Smart Tow system will handle the rest.



GET UP AND GO

With the Smart Tow system, you can choose from five preset launch intensities, from an aggressive profile for veteran skiers to a more subdued start for younger tubers. Once the intensity is selected, all the driver has to do is apply the throttle. The Smart Tow system takes it from there for the perfect experience every time.





ACTIVE TRIM

On boats with Active Trim installed, controlling the Active Trim system through your VesselView display makes boating simpler by automatically adjusting outboard or sterndrive trim settings in response to speed and directional changes. Engaging Active Trim is an easy way to improve fuel efficiency and unlock peak engine performance for a more enjoyable boating experience.

ADVANCED SOUND CONTROL

Maybe you're the type who wants to hear the horsepower behind you, but maybe you're not. With Advanced Sound Control – available on Mercury® V8 Verado® outboards – you can toggle between ultra-quiet operation or a “throatier” growl.



JOYSTICK PILOTING

When you combine Joystick Piloting with SmartCraft®-capable multi-engine propulsion systems, you gain access to AutoPilot controls, a complete set of advanced steering functions that make any boater look like a seasoned pro. Around the docks, Joystick Piloting makes steering the boat as simple as pushing the joystick whichever way you want to go. In open water, the additional AutoPilot features enhance just about any boating activity.



ROUTE

Program a series of waypoints on a VesselView® display, and the AutoPilot system will automatically navigate along that route.



SKYHOOK® DIGITAL ANCHOR

With the push of a button, the Skyhook digital anchor locks in a boat's position using GPS, then works with the engines and drives to maintain position and heading – regardless of wind or current.



HEADING

Auto Heading uses an integrated digital compass to automatically maintain the boat's heading to keep you on your desired path.



TROLL CONTROL

Troll Control eases the critical task of precisely maintaining a targeted trolling speed by locking in the engine rpm. Once set, adjustments can be made in 10 rpm increments to counter changes in direction, current or wind.

Compatible with SmartCraft-capable engines down to 40hp.

CRUISE CONTROL

Cruise Control adjusts the throttle to maintain speed based on an integrated GPS reading. It's compatible with select engines outfitted with Mercury® Digital Throttle & Shift controls – part of the SmartCraft® family of digital technologies.



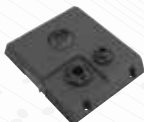


VesselView903



VesselView703

HD Touchscreen Display	•	•
Screen Size	9"	7"
Smart Tow®* (DTS)	•	•
Troll Control (40hp & up)	•	•
Cruise Control (40hp & up)	•	•
Advanced Sound Control (V8 Verado)	•	•
AutoPilot Features	•	•
Active Trim† (40 & up)	•	•
GPS and Chartplotter	•	•
Software Updates	•	•
Fault Code Notifications	•	•
NMEA 2000® Compatible	•	•
30+ Languages and Multiple Unit Conversions	•	•
Radar Display Ready	•	•
2D/3D Sonar Ready	•	•
Fuel Tank Level‡	•	•
SmartCraft® Brightness Control	•	•
WI-FI®	•	•
Bluetooth®		
Maintenance Reminders		
Engine Support	up to 6 engines	up to 6 engines



VesselView Link is sold independently for single and multi-engine configurations and is required for operating VesselView903, 703 and 502 screens. It's included with primary 903, 703 and 502 kits.



VesselView502



VesselView403



VesselView Mobile

VesselView502	VesselView403	VesselView Mobile
•	•	Mobile or tablet device
•	•	
•	•	
•	•	
•	•	
•	•	
•	•	
•	•	Navionics® application required
•	•	•
•	•	•
•	•	•
•	•	
•	•	
•	•	
•	•	
•	•	
•	•	•
•	•	•
up to 4 engines	up to 4 engines (2 per display)	up to 4 engines

*Compatible with most 40hp and up electronically controlled SmartCraft-capable engines with Active Trim module installed.

*Requires Digital Throttle & Shift controls
 †Requires a fuel tank sensor



The Power To Do More.

NOVEMBER 2020 90-8M0177255

©2020 Mercury Marine. All Rights Reserved. Reproduction in whole or in part without permission is prohibited.

Wi-Fi is a registered trademark of the Wi-Fi Alliance. Android is a trademark of Google LLC. IOS is a registered trademark of Cisco.

Lowrance is a registered trademark of Navico. Simrad is a registered trademark of Kongsberg Maritime AS, licensed to Navico

Holding AS. NMEA 2000 is a registered trademark of the National Marine Electronics Association. Navionics is a registered trademark

of Navionics S.r.l. Bluetooth is a registered trademark of Bluetooth SIG. All other trademarks belong to Brunswick Corporation.