

Please reference & download a copy of the Users Manual at: [www.mercurymarine.com/vesselview](http://www.mercurymarine.com/vesselview)

Software Updates and Documentation  
[Download Here](#)



\*Note: Screen layout varies based on number of engines & engine type.

### Engine Page

Touch zones 1-5 provide access to full screen vessel information

- 1 Engine - Displays custom list of engine values
- 2 Battery - Displays battery values plus graphs
- 3 Fuel - Displays individual fuel tank values plus graphs
- 4 Trim - Displays trim scales plus numeric numbers
- 5 Speed - Displays large speed gauge with additional engine info

### 6 Control Bar: Auto Pilot

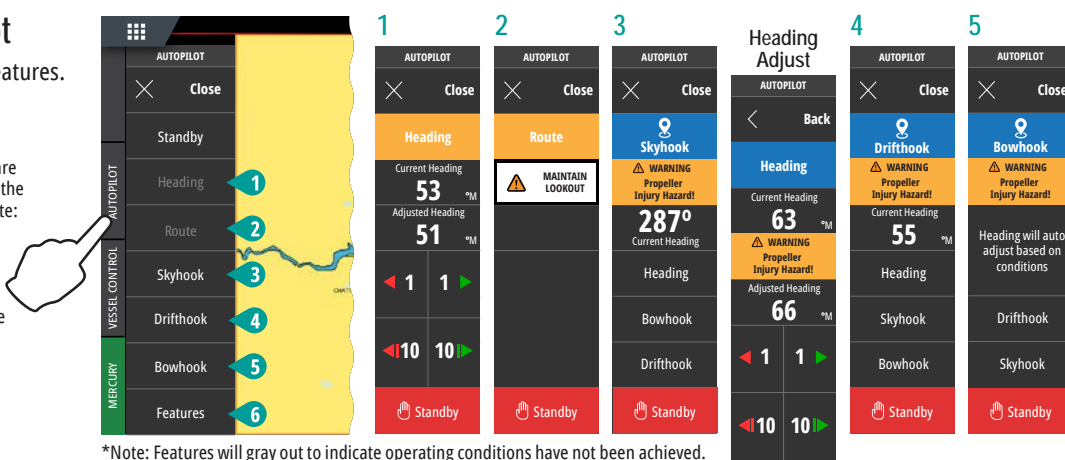
Allows access to Mercury Auto Pilot\* features.

\*Note: features vary based on engine type.

Drifthook (4), Bowhook (5) & Heading Adjust are available as downloadable content (DLC) through the **Features (6)** button or via the GoFree Shop Website: [www.gofreemarine.com/mercury](http://www.gofreemarine.com/mercury)

These downloadable features require Mercury's latest joystick system and the electronic control modules on your Joystick system may need to have the firmware updated by your Mercury certified dealer.

To learn more visit:  
[www.mercurymarine.com/vesselview](http://www.mercurymarine.com/vesselview)



\*Note: Features will gray out to indicate operating conditions have not been achieved.

### 7 Control Bar: Vessel Control

Allows access to Mercury engine\* control features.

\*Note: Control features vary based on engine type.

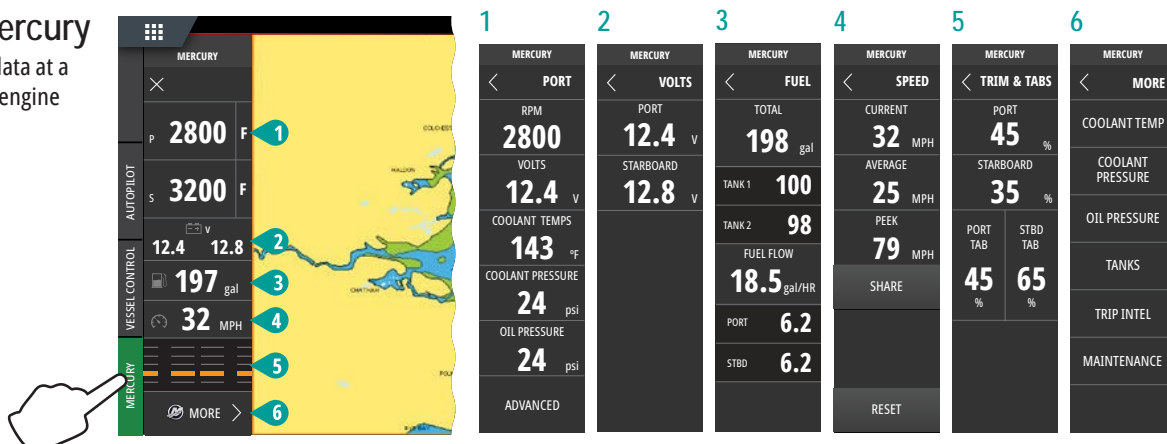
Control **ACTIVE TRIM**\* functionality thru VesselView  
\*Active Trim control module required

To learn more visit:  
[www.mercurymarine.com](http://www.mercurymarine.com)



### 8 Control Bar: Mercury

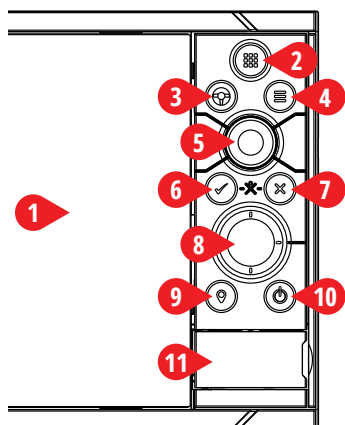
Allows you to view engine data at a glance, without having the engine page open.



Please reference & download a copy of the Users Manual at: [www.mercurymarine.com/vesselview](http://www.mercurymarine.com/vesselview)

Software Updates and Documentation  
[Download Here](#)

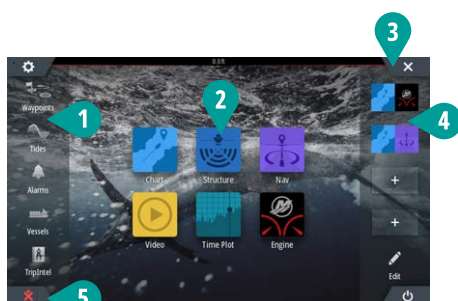
### Display Controls



- 1 **Touch Screen**
- 2 **Pages/Home Key** - press to open the Home page for page selection and setup options.
- 3 **WheelKey** - user configurable key, refer to Operator manual.
  - Default without autopilot in system: Short press toggles between panels on split screen. Long press maximizes active panel on split screen.
  - Default with autopilot in system: Short press opens autopilot controller and places autopilot in standby mode. Long press toggles between panels on split screen.
- 4 **Menu Key** - press to display the active panel's menu.
- 5 **Rotary knob** - turn to zoom or scroll the menu, press to select an option.
- 6 **Enter Key** - press to select an option or save settings.
- 7 **Exit Key** - press to exit a dialog, return to previous menu level, and clear cursor from panel.
- 8 **Arrow keys** - press to activate cursor or to move cursor.
  - Menu operation: press to navigate through menu items and to adjust a value.
- 9 **Mark key** - press to place waypoint at vessel position, or at cursor position when cursor is active
- 10 **Power key** - press and hold to turn the unit ON/OFF. Press once to display the System control dialog, additional presses will toggle through 3 default dimming levels.
- 11 **Card reader door**

### Home Page

HOME KEY



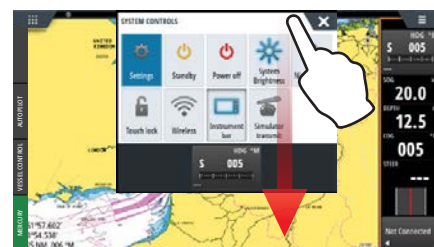
- |                       |  |                                      |
|-----------------------|--|--------------------------------------|
| 1 <b>Tools</b>        | 3 <b>Close button</b><br>(Return to last screen) | 4 <b>Favorites</b>                   |
| 2 <b>Applications</b> |  | 5 <b>Man Over Board (MOB) button</b> |

### System Control Dialog

Gain quick access to system settings. Activate by:

- pressing the **POWER** or
- swiping from the top of any application screen

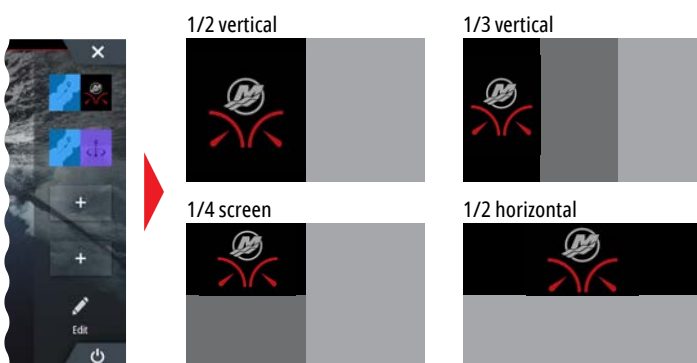
POWER KEY



Note: Content of the System Control dialog depends on connected equipment.

### Favorites

Use favorites to create custom panel configurations with engine data



### Edit a favorite page

Enter the Favorites edit mode by:

- Tapping the Edit icon
- Pressing and holding a favorite button
- Select edit options



Edit favorite page



Delete favorite page



Add new favorite page

- Follow on screen instructions to build custom screens

### Adjust split page panel size

- 1 - Open the System Control Dialog  
- Tap the adjust splits to show the resize icon



- 2 Drag the resize icon to set preferred panel size



- 3 Save the changes by tapping the screen

